

GenASIs Scan & Analysis - ALK

Personalized Medicine in Non-Small Cell Lung Cancer

GenASIs Scan & Analysis ALK is a computer aided solution aiding in the evaluation of gene rearrangements involving the ALK gene, which has been identified as a significant factor in the development of non-small cell lung cancer (NSCLC).

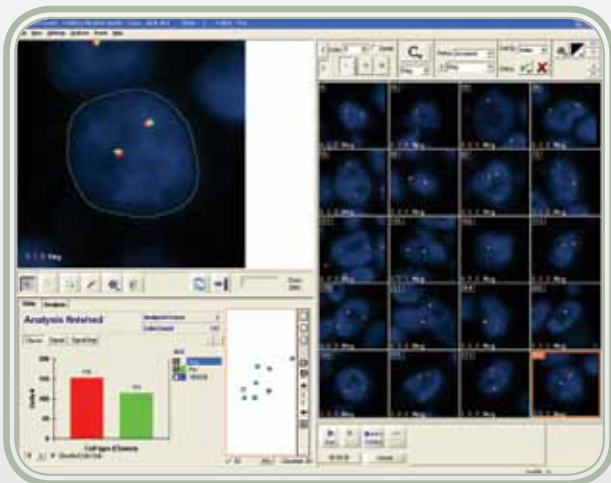
GenASIs allows clinicians to

- automatically scan and analyze ALK slides via fluorescence in situ hybridization (FISH) in formalin-fixed paraffin-embedded (FFPE) non-small cell lung cancer (NSCLC) tissue specimens stained with Vysis ALK Break Apart FISH Probe Kit from Abbott, and
- identify the ALK gene rearrangement

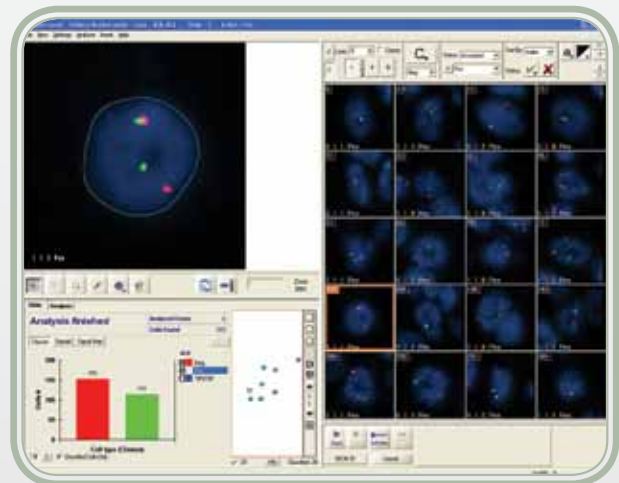
while achieving accurate, repeatable and standardized results which enhance clinical accuracy and save time.

The Vysis Anaplastic Lymphoma Kinase (ALK) Break Apart FISH Probe Kit could aid in the selection of previously treated non-small cell lung cancer patients for treatment with the Pfizer drug Xalkori® (Crizotinib), which may result in a life-prolonging survival benefit.

With GenASI's ALK, pathologists can focus more time on the professional aspect of the case, and leave the cell counting to the computer.



Negative Class



Positive Class



Applied Spectral Imaging
Bringing Details to Light



Slide Capture:

1. Optimal field of view setup with dry or oil objectives
2. Highly sensitive camera and customized contrast enhancement for tissue samples.

Accurate Analysis:

1. Segmenting even clustered touching cells to free the pathologist from manual cell definition
2. Detects and enumerates even small and faint signals
3. (ALK) Smart Fusion algorithms to support overlapping and distant fusions

Greater Throughput:

1. Automatic prescan of H&E, IHC and FISH slides with tissue-match (for identifying tumor regions within the FISH slide)
2. Full case analysis within 3-6 minutes – from capture to report
3. Interactive and semi-automated capture of tumor regions

HIGHLIGHTS

- Reduces case time
- Higher clinical accuracy
- Automated cell analysis
- Cell gallery and reporting tools in Case Data Manager
- Fully automated, computer aided cell segmentation, signal detection and cell classification
- Detects and enumerates even small and faint signals
- Accurate and repeatable results

FDA cleared for clinical use, using Abbott's Break Apart FISH Probe Kit.



North America
Applied Spectral Imaging Inc.
Tel: +1 760 929 2840
sales-inc@spectral-imaging.com

Headquarters
Applied Spectral Imaging Ltd.
Tel: +1 817 886 6031
sales@spectral-imaging.com

Europe
Applied Spectral Imaging GmbH
Tel: +49 6203 923800
sales-gmbh@spectral-imaging.com