

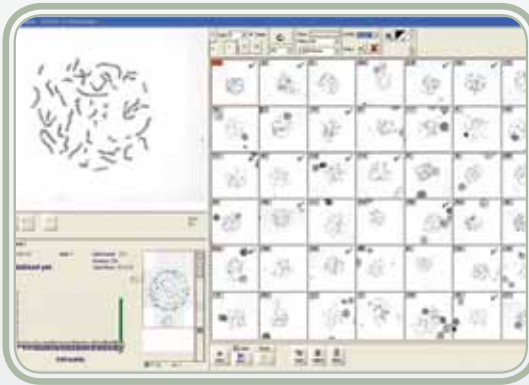
GenASIs Scan & Analysis MetScan

Quality Through Automation

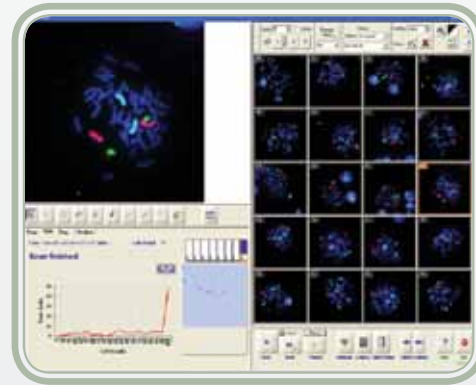
Many cytogenetic labs are searching for more effective ways to reduce the tedious, yet critical processes of metaphase search and image analysis. By introducing GenASIs MetScan to your laboratory, you can automate day-to-day manual processes while increasing quality standards.

Using a motorized 9-slide scanning stage, GenASIs MetScan carries out semi-automatic or fully unattended scans on brightfield and multi-colored fluorescent slides. MetScan reliably detects metaphases of any source based on user-trainable classifiers. Results are displayed in a user friendly gallery and each metaphase can be accessed with a single mouse click for review under high magnification. Smart automation enables the detection of cover slip regions and colonies during a quick prescan to identify sparse or condensed metaphases.

Numerous features allow MetScan to be beneficial and efficient even in small labs by locating the best metaphases in samples having a low mitotic index, identifying the most highly spread metaphases and more.



Metaphase scan in brightfield



Fastest extraction of metaphases in full color using a dual scan process



GenASIs Scan & Analysis

GenASIs Scan & Analysis MetScan



Typical Applications

- Automatically locate metaphases in tumor samples with low mitotic index
- View metaphases selectively per individual colony for amniotic samples
- Sort identified metaphases based on overall quality, enabling the user to focus on ideal metaphases
- Locate metaphases in FISH slides
- Image acquisition suitable for both brightfield and fluorescent staining

Scanning

- Motorized 9-slide scanning stage; upgradeable with an automated tray loader
- Fully automated, walk-away operation for maximum throughput and efficiency
- Ability to choose predefined or user-defined regions on a slide
- Automatic illumination, exposure and contrast adjustment
- Fast relocation to any metaphase in the gallery for review
- Analysis or review of previously scanned data in parallel to scanning process

Analysis & Relocation

- Acquisition of high magnification metaphases automatically or semi-automatically on any other station in the network without the need to match coordinates.
- Saving to database coordinates and thumbnails of scanned metaphases
- Relocation to any identified metaphase with a single mouse click for review
- Optimization of user-trainable classifiers of sample types and the laboratory's specific staining protocols

For research purposes only, not intended for diagnosis and therapeutic use.



North America
Applied Spectral Imaging Inc.
Tel: +1 760 929 2840
sales-inc@spectral-imaging.com

Headquarters
Applied Spectral Imaging Ltd.
Tel: +1 817 886 6031
sales@spectral-imaging.com

Europe
Applied Spectral Imaging GmbH
Tel: +49 6203 923800
sales-gmbh@spectral-imaging.com